

Genuine Accessories

CLS and E-Class



CLS and E-Class Saloon, Estate, Coupé, Cabriolet, All-Terrain

Mercedes-Benz





Exterior



Interior

Safety and quality.

At Mercedes-Benz the vision of accident-free driving is paramount. Because where Mercedes-Benz vehicles are concerned, we take the same uncompromising approach to safety as we do to driving pleasure. There are no compromises when it comes to developing the range of Genuine Accessories either. Perfectly tailored to your vehicle and extensively tested by our engineers, the products not only make an active contribution to your safety but also protect other road users.

The star has always signified allure, perfection and responsibility – attributes which are also reflected in the quality of our accessories, all of which further enhance our vehicles' style or sportiness – not to mention their already outstanding comfort. That special sense of design and attention to detail make a vehicle a true Mercedes-Benz. From that first outward impression to the inner attributes. Quality you can sense: just by looking, listening, touching – and of course driving.



Cargo & Care



AMG

Contents.

04 | Exterior

- 06 | Light-alloy wheels
- 18 | Wheel accessories
- 20 | Mercedes-Benz
Sport Equipment

22 | Interior

- 24 | Telematics
- 28 | Interior
- 34 | Child safety

36 | Cargo & Care

- 38 | Carrier solutions
- 42 | Interior stowage

46 | AMG

- 46 | AMG accessories
- 48 | AMG light-alloy wheels



03

04

01

02

05



Exterior.

Using carefully chosen details to express your sense of style seems to come naturally to you. You’re someone who feels that elegance should never be diluted. Someone who intuitively selects the best of everything. When it comes to making an impression, you’re a master of the art.

01	Hub caps in himalayas grey.	18
02	Black valve caps.	18
03	Black exterior mirror housings.	21
04	High-sheen chromed door handle recesses.	21
05	5-twin-spoke wheel.	09
06	Rear spoiler.	21

Unadulterated aesthetics.
Genuine wheels for the CLS.

				CLS	Item number
01	5-twin-spoke wheel.	Finish: himalayas grey, high-sheen.	Wheel: 8 J x 20 ET 33 Tyre: 245/35 R20 XL	●	A257 401 0500 7X21
		Rear axle:	Wheel: 9 J x 20 ET 33 Tyre: 275/30 R20 XL		A257 401 0600 7X21
02	5-twin-spoke wheel.	Finish: matt himalayas grey.	Wheel: 8 J x 19 ET 33 Tyre: 245/40 R19 XL	●	A257 401 0300 7X69
		Rear axle:	Wheel: 9 J x 19 ET 33 Tyre: 275/35 R19 XL		A257 401 0400 7X69
03	5-spoke wheel.	Finish: black, high-sheen.	Wheel: 8 J x 19 ET 33 Tyre: 245/40 R19 XL	●	A257 401 1000 7X23
		Rear axle:	Wheel: 9 J x 19 ET 33 Tyre: 275/35 R19 XL		A257 401 1100 7X23
04	5-spoke wheel.	Finish: vanadium silver.	Wheel: 8 J x 19 ET 33 Tyre: 245/40 R19 XL	●	A257 401 1000 7X45
		Rear axle:	Wheel: 9 J x 19 ET 33 Tyre: 275/35 R19 XL		A257 401 1100 7X45

Light-alloy wheels are supplied without tyres, wheel bolts, valve caps or hub caps.



50.8 cm | 20" 01 03 48.3 cm | 19"
48.3 cm | 19" 02 04 48.3 cm | 19"





02 45.7 cm | 18"



48.3 cm | 19" 01 03 45.7 cm | 18"
45.7 cm | 18" 04 05 45.7 cm | 18"



				CLS	Item number
01	5-twin-spoke wheel.	Finish: tremolite metallic. Rear axle:	Wheel: 8 J x 19 ET 33 Tyre: 245/40 R19 XL Wheel: 9 J x 19 ET 33 Tyre: 275/35 R19 XL	●	A257 401 1200 7X44 A257 401 1300 7X44
02	5-twin-spoke wheel.	Finish: tremolite metallic. Rear axle:	Wheel: 8 J x 18 ET 33 Tyre: 245/45 R18 XL Wheel: 9 J x 18 ET 33 Tyre: 275/40 R18	●	A257 401 0800 7X44 A257 401 0900 7X44
03	5-twin-spoke wheel.	Finish: matt black. Rear axle:	Wheel: 8 J x 18 ET 33 Tyre: 245/45 R18 XL Wheel: 9 J x 18 ET 33 Tyre: 275/40 R18	●	A257 401 0100 7X36 A257 401 0200 7X36
04	5-twin-spoke wheel.	Finish: vanadium silver. Rear axle:	Wheel: 8 J x 18 ET 33 Tyre: 245/45 R18 XL Wheel: 9 J x 18 ET 33 Tyre: 275/40 R18	●	A257 401 0100 7X45 A257 401 0200 7X45
05	10-hole wheel.	Finish: black, high-sheen. Rear axle:	Wheel: 8 J x 18 ET 33 Tyre: 245/45 R18 XL Wheel: 9 J x 18 ET 33 Tyre: 275/40 R18	●	A257 401 0700 7X23 A257 401 3300 7X23

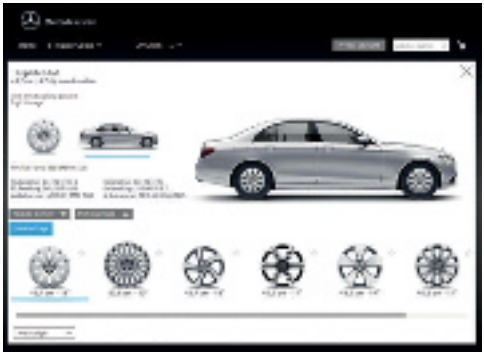
Light-alloy wheels are supplied without tyres, wheel bolts, valve caps or hub caps.

Polished performance.
Genuine wheels.

				Saloon	Estate	Coupé	Cabriolet	Item number
01	Multi-spoke wheel.	Finish: himalayas grey, high-sheen. Rear axle:	Wheel: 8 J x 20 ET 43 Tyre: 245/35 R20 XL Wheel: 9 J x 20 ET 53 Tyre: 275/30 R20 XL	●	●	●	●	A213 401 0700 7X21 A213 401 0800 7X21
02	5-twin-spoke wheel.	Finish: tremolite metallic, high-sheen. Rear axle:	Wheel: 8 J x 20 ET 43 Tyre: 245/35 R20 XL Wheel: 9 J x 20 ET 53 Tyre: 275/30 R20 XL	●	●	●	●	A238 401 0100 7X44 A238 401 0200 7X44
03	5-twin-spoke wheel.	Finish: black, high-sheen. Option for rear axle:	Wheel: 8 J x 20 ET 43 Tyre: 245/35 R20 XL Wheel: 9 J x 20 ET 53 Tyre: 275/30 R20 XL	●	●	●	●	A238 401 0500 7X23 A238 401 0600 7X23
04	6-spoke wheel.	Finish: black, high-sheen. Rear axle:	Wheel: 8 J x 19 ET 43 Tyre: 245/40 R19 XL Wheel: 9 J x 19 ET 53 Tyre: 275/35 R19 XL	●	●	●	●	A213 401 3400 7X23 A213 401 3500 7X23
05	5-spoke wheel.	Finish: tremolite metallic, high-sheen.	Wheel: 8 J x 19 ET 43 Tyre: 245/40 R19 XL	●	●	●	●	A213 401 1700 7X44

Because of differences in national regulations, various different versions of each vehicle exist. Please also bear in mind that vehicle development is permanently ongoing. As a result, not all of the wheel/tyre combinations shown in this brochure will be approved for your particular Mercedes-Benz. Your authorised Mercedes-Benz dealer has access to constantly updated information on every Mercedes-Benz wheel, including the relevant technical inspection findings and licensing conditions, and will be happy to advise you.

Light-alloy wheels are supplied without tyres, wheel bolts, valve caps or hub caps.



Choose your favourite wheels online. Our Accessories Configurator shows you at a click of the mouse how the various Mercedes-Benz light-alloy wheels will look on your vehicle. Visit our website at <http://configurator.mercedes-benz-accessories.com>.



02 50.8 cm | 20"



50.8 cm | 20" 01 03 50.8 cm | 20"
48.3 cm | 19" 04 05 48.3 cm | 19"





02 48.3 cm | 19"



48.3 cm | 19" 01 03 48.3 cm | 19"
48.3 cm | 19" 04 05 45.7 cm | 18"



06 45.7 cm | 18"

				Saloon	Estate	Coupé	Cabriolet	Item number
01	5-twin-spoke wheel.	Finish: black, high-sheen. Option for rear axle:	Wheel: 8 J x 19 ET 43 Tyre: 245/40 R19 XL Wheel: 9 J x 19 ET 53 Tyre: 275/35 R19 XL	●	●	●	●	A238 401 0300 7X23 A238 401 0400 7X23
02	6-spoke wheel.	Finish: tremolite metallic, high-sheen. Option for rear axle:	Wheel: 8 J x 19 ET 43 Tyre: 245/40 R19 XL Wheel: 9 J x 19 ET 53 Tyre: 245/35 R19 XL	●	●	●	●	A213 401 3400 7X44 A213 401 3500 7X44
03	10-spoke wheel.	Finish: tremolite metallic, high-sheen. Option for rear axle:	Wheel: 8 J x 19 ET 43 Tyre: 245/40 R19 XL Wheel: 9 J x 19 ET 53 Tyre: 275/35 R19 XL	●	●	●	●	A213 401 0500 7X44 A213 401 0600 7X44
04	5-twin-spoke wheel.	Finish: vanadium silver. Option for rear axle:	Wheel: 8 J x 19 ET 43 Tyre: 245/40 R19 XL Wheel: 9 J x 19 ET 53 Tyre: 245/35 R 19 XL	●	●	●	●	A238 401 0300 7X45 A238 401 0400 7X45
05	5-spoke wheel.	Finish: tremolite metallic, high-sheen. Option for rear axle:	Wheel: 8 J x 18 ET 43 Tyre: 245/45 R18 XL Wheel: 9 J x 18 ET 53 Tyre: 275/40 R18 XL	●	●	●	●	A213 401 3200 7X44 A213 401 3300 7X44
06	5-spoke wheel.	Finish: black, high-sheen. Option for rear axle:	Wheel: 8 J x 18 ET 43 Tyre: 245/45 R18 XL Wheel: 9 J x 18 ET 53 Tyre: 275/40 R18 XL	●	●	●	●	A213 401 3200 7X23 A213 401 3300 7X23

Light-alloy wheels are supplied without tyres, wheel bolts, valve caps or hub caps.

				Saloon	Estate	Coupé	Cabriolet	Item number
01	5-twin-spoke wheel.	Finish: tremolite metallic, high-sheen. Option for rear axle:	Wheel: 8 J x 18 ET 43 Tyre: 245/45 R18 XL Wheel: 9 J x 18 ET 53 Tyre: 275/40 R18 XL	●	●	●	●	A213 401 1600 7X44 A213 401 0400 7X44
02	5-twin-spoke wheel.	Finish: black, high-sheen.	Wheel: 8 J x 18 ET 43 Tyre: 245/45 R18 XL	●	●	●	●	A213 401 1600 7X23
03	5-spoke wheel.	Finish: vanadium silver.	Wheel: 8 J x 18 ET 43 Tyre: 245/45 R18 XL	●	●	●	●	A213 401 1400 7X45
04	5-spoke wheel.	Finish: tremolite metallic, high-sheen.	Wheel: 8 J x 18 ET 43 Tyre: 245/45 R18 XL	●	●	●	●	A213 401 1400 7X44
05	15-spoke wheel.	Finish: black, high-sheen. Option for rear axle:	Wheel: 8 J x 18 ET 43 Tyre: 245/45 R18 XL Wheel: 9 J x 18 ET 53 Tyre: 275/40 R18 XL	●	●	●	●	A213 401 1500 7X23 A213 401 4800 7X23
06	10-spoke wheel.	Finish: vanadium silver.	Wheel: 8 J x 18 ET 43 Tyre: 245/45 R18 XL	●	●	●	●	A213 401 1100 7X45
07	10-hole wheel.	Finish: vanadium silver.	Wheel: 8 J x 18 ET 43 Tyre: 245/45 R18 XL	●	●	●	●	A213 401 0300 7X45
08	10-spoke wheel.	Finish: vanadium silver.	Wheel: 7.5 J x 17 ET 40 Tyre: 225/55 R17	●	●	●	●	A213 401 1300 7X45
09	5-spoke wheel.	Finish: tremolite metallic, high-sheen.	Wheel: 7.5 J x 17 ET 40 Tyre: 225/55 R17	●	●	●	●	A213 401 1200 7X44
10	5-spoke wheel.	Finish: vanadium silver.	Wheel: 7.5 J x 17 ET 40 Tyre: 225/55 R17	●	●	●	●	A213 401 1200 7X45
11	10-hole wheel.	Finish: vanadium silver.	Wheel: 7.5 J x 17 ET 40 Tyre: 225/55 R17	●	●	●	●	A213 401 0200 7X45
12	10-spoke wheel.	Finish: himalayas grey, high-sheen.	Wheel: 7.5 J x 17 ET 40 Tyre: 225/55 R17	●	●	●	●	A213 401 1300 7X21
13	10-spoke wheel.	Finish: vanadium silver.	Wheel: 7.5 J x 17 ET 40 Tyre: 225/55 R17	●	●	●	●	A213 401 1000 7X45
14	Multi-spoke wheel.	Finish: vanadium silver.	Wheel: 7 J x 16 ET 32 Tyre: 205/65 R16	●				A213 401 0900 7X45
15	10-hole wheel.	Finish: vanadium silver.	Wheel: 7 J x 16 ET 32 Tyre: 205/65 R16	●				A213 401 0100 7X45

Light-alloy wheels are supplied without tyres, wheel bolts, valve caps or hub caps.



45.7 cm | 18" 01 02



45.7 cm | 18"



03 45.7 cm | 18"



04 45.7 cm | 18"



05 45.7 cm | 18"



45.7 cm | 18" 06 07
43.2 cm | 17"



45.7 cm | 18"
43.2 cm | 17"



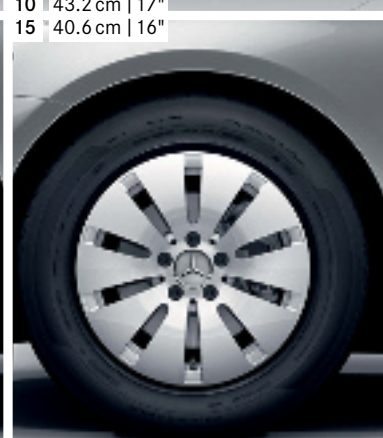
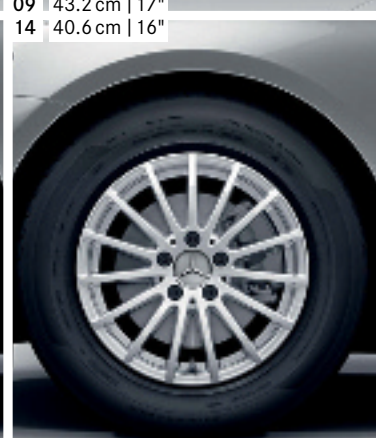
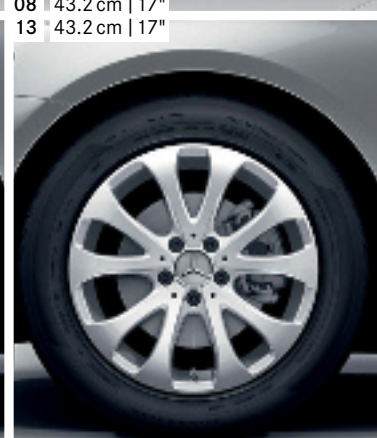
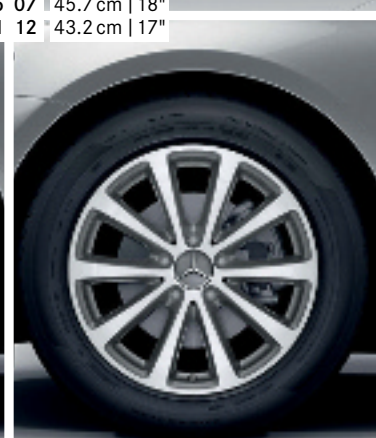
08 43.2 cm | 17"
13 43.2 cm | 17"



09 43.2 cm | 17"
14 40.6 cm | 16"



10 43.2 cm | 17"
15 40.6 cm | 16"





02 48.3 cm | 19"



50.8 cm | 20" 01 03 48.3 cm | 19"
48.3 cm | 19" 06 07 48.3 cm | 19"

04 48.3 cm | 19"
08 48.3 cm | 19"



48.3 cm | 19" 05



Bold trailblazers.
Genuine wheels for the All-Terrain.

				All-Terrain	Item number
01	5-twin-spoke wheel.	Finish: tremolite metallic, high-sheen. Rear axle:	Wheel: 8.5 J x 20 ET 40 Tyre: 245/40 R20 XL Wheel: 9.5 J x 20 ET 50 Tyre: 275/35 R20 XL	●	A253 401 2300 7X44 A213 401 4500 7X44
02	10-spoke wheel.	Finish: matt himalayas grey.	Wheel: 8 J x 19 ET 38 Tyre: 245/45 R19 XL	●	A253 401 0900 7X68
03	5-spoke wheel.	Finish: black, high-sheen.	Wheel: 8 J x 19 ET 38 Tyre: 245/45 R19 XL	●	A253 401 1000 7X23
04	5-spoke wheel.	Finish: tremolite metallic, high-sheen.	Wheel: 8 J x 19 ET 38 Tyre: 245/45 R19 XL	●	A253 401 1000 7X44
05	12-spoke wheel.	Finish: tremolite metallic, high-sheen.	Wheel: 8 J x 19 ET 38 Tyre: 245/45 R19 XL	●	A253 401 1100 7X44
06	6-spoke wheel.	Finish: black, high-sheen.	Wheel: 8 J x 19 ET 38 Tyre: 245/45 R19 XL	●	A253 401 1600 7X23
07	10-spoke wheel.	Finish: tremolite metallic, high-sheen.	Wheel: 8 J x 19 ET 38 Tyre: 245/45 R19 XL	●	A253 401 2200 7X44
08	5-twin-spoke wheel.	Finish: black, high-sheen.	Wheel: 8 J x 19 ET 38 Tyre: 245/45 R19 XL	●	A253 401 3200 7X23

Light-alloy wheels are supplied without tyres, wheel bolts, valve caps or hub caps.

Expressive individualism.
Wheel accessories.

	CLS	Saloon	Estate	Coupé	Cabriolet	Item number
Hub caps. Protect the wheel hub from dirt. Available in the following versions:						
01 star with laurel wreath, classic design, blue.	●	●	●	●	●	A171 400 0125 5337
02 star with laurel wreath, black.	●	●	●	●	●	A222 400 2200 9040
03 star with laurel wreath, classic design, grey.	●	●	●	●	●	A171 400 0125 7P70
04 himalayas grey with chrome star.	●	●	●	●	●	A220 400 0125 7756
05 black with chrome star.	●	●	●	●	●	B6 647 0200
06 matt black with chrome star.	●	●	●	●	●	A220 400 0125 9283
07 RUDmatic snow chain. Luxury, easy-fit snow chain. Top test results with regard to traction, braking distances, smooth running, lateral stability and durability. E.g. for 245/45 R18	●	●	●	●	●	B6 755 0046-48
08 Mud flaps. Protect the underbody and sides of the vehicle from stone chipping and dirt. Available in pairs for front or rear axle. Black, grained.						
Front set, black ¹ .		●	●			A213 890 0100
Rear set, black ¹ .		●				A213 890 0200
			●			A213 890 0300
09 Black valve caps, set of 4. Stylish highlights in a new design. Protect the valves from dirt.	●	●	●	●	●	B6 647 2002
10 Black rim locks. Protect your valuable light-alloy wheels from theft: set of coded key and four safety screws.	●	●	●	●	●	A001 990 1707
11 Emergency spare wheel. Ensures compliance with country-specific statutory requirements. The emergency spare wheel is secured in place in the boot/load compartment in an emergency spare wheel bag.	●	●	●	●	●	A213 400 0600
12 Emergency spare wheel bag. Designed to secure the emergency spare wheel in place on the boot floor.	●	●	●	●	●	A000 585 0100
Vehicle tool kit not pictured. Everything you need to change a wheel. All handily stored in a compact bag.	●	●	●			B6 685 0791
				●	●	A205 580 0100
Tyre pressure gauge not pictured. Allows you to carry out a quick tyre pressure check on the road or at home. Supplied with leather pouch.	●	●	●	●	●	B6 658 8140

¹ Not for AMG Line, code P31/950/956/772, AMG model variants, Standard Exterior package, code P76, Night Package, P55, or code M035.



01



02



03



04 07 08



05



06 09



10



11 12



01 05



02 05 06



04 07 48.3 cm | 19"



03



Honed elegance.
Mercedes-Benz Sport Equipment.

		CLS	Saloon	Estate	Coupé	Cabriolet	Item number
01	Black exterior mirror housings, set of 2¹. For an individual, sporty and dynamic look.	●	●	●	●	●	A213 811 1000
	High-sheen chromed door handle recesses, set of 2. High-sheen door handle recesses in chrome design. Protect the handle recess from scratches and offer a high-quality, individual look.						
02	Large door handle recesses.	●			●	●	A205 760 4000
	Small door handle recesses.	●	●	●			A205 760 4200
03	Sports pedals in stainless steel, with rubber studs. High-sheen stainless steel pedals with non-slip stud panel.						
	For vehicles with manual transmission.		●	●	●	●	A000 290 0300
	For vehicles with automatic transmission.	●	●	●	●	●	A000 290 0500
04	LED Mercedes star projectors, set of 2. For the exit lamps in the side doors.	●			●	●	A217 820 5800 ²
			●	●			A213 820 4503
05	Rear spoiler, primed³. Discreet spoiler, fitted to the boot lid, subtly accentuating the rear contours. High-quality priming allows the product to be painted in the desired colour. No entry in vehicle documents required.	●					A257 793 0000
			●				A213 793 0000
					●		A238 793 0000
06	Roof spoiler, primed³. Elongates the roof line and gives the rear of the vehicle a more dynamic and sporty look. Does not affect field of vision in inside rearview mirror. No entry in vehicle documents required.		●				A213 793 0100
	High-sheen chromed rear trim strip not pictured. Coordinates with all of your vehicle's chrome trim parts.				●	●	A238 740 0000
	Folding draught stop not pictured. The draught-stop protects the occupants against draughts and makes it possible to drive with the top down even at higher speeds and in cooler temperatures. It can be fitted in next to no time and removed again just as swiftly. When not in use it can be packed away in compact format on board.					●	on request
07	6-spoke wheel. Finish: black, high-sheen. Option for rear axle:		●	●	●	●	A213 401 3400 7X23 A213 401 3500 7X23

¹ Not for vehicles with code 040U, code P60 or code P55. ² Available from 07/2018. ³ Not for AMG model variants.

Interior.

Don't be unassuming – relish the prospect of more. Inside your new Mercedes-Benz, with its cutting-edge take on luxury, you're surrounded with every comfort. When you're contemplating perfection, where you're sitting makes all the difference.

01 “BABY-SAFE plus II” child seat.	34
02 Navigation system SD card.	25





02

01



01 02
03 04



Telephone module
+ SIM



Telephone module
+ mobile phone



Mobile connections.

Mercedes-Benz telematics.

	CLS	Saloon	Estate	Coupé	Cabriolet	Item number
01 Navigation system SD card. For retrofitting code 357, only in conjunction with code 355 and code 506, Audio 20, NTG5.5	●	●	●	●	●	on request
02 COMAND Online operating unit, NTG5.5. Fully integrated high-end multimedia system with hard-drive navigation system, internet browser, telephony plus DVD Video and Music Register, shown on high-resolution media display.	●	●	●	●	●	on request
03 Universal smartphone cradle ^{1,2} . The universal smartphone cradle allows you to use a variety of different telephones in conjunction with the vehicle's external aerial. The size of the cradle can be altered at the upper and lower edge to offer the optimum fit for each smartphone. The cradle is fitted to the pre-installation in the centre console as normal and the smartphone is connected to the audio system via Bluetooth®. The inductive aerial in the cradle, together with the connection to the external aerial, ensures optimum reception during phone calls or when using the internet. Separately available charging cables with micro USB or Lightning connectors allow you to charge your smartphone in conjunction with the universal smartphone cradle.		●	●	●	●	A222 820 6401
Charging cable with micro USB port not pictured.		●	●	●	●	A222 820 6601
Charging cable with Lightning connector not pictured.		●	●	●	●	A222 820 6701
04 Mercedes-Benz Bluetooth® (SAP) telephone module ^{1,3} . The telephone module provides optimal phone and internet connectivity. The integral UMTS module and the direct link to the vehicle's external aerial ensure a fast, stable and reliable connection. You can simultaneously talk on the phone, use online functions and receive text messages via your multimedia system. The telephone module can be used as a permanently installed telephone and as a data modem and is easy to operate via the multimedia system with all the advantages of the on-board pre-installation. The module also allows access to the contact details on the SIM card and features a USB port via which your mobile phone can be recharged if required. The telephone module can be operated via the SIM card in your mobile phone or a mini SIM card can be inserted directly into the module.		●	●	●	●	A212 906 6303
Data cable for USB Tethering ^{1,4} not pictured.		●	●	●	●	A222 820 5115

¹ Further information on, i.a., the compatibility of mobile phones can be found at www.mercedes-benz.com/connect ² Only in conjunction with Universal Telephony package, code 386.

³ Only in conjunction with car telephony, code 379. SAP (SIM Access Profile) allows the module to access your mobile phone's SIM card. ⁴ For vehicles with COMAND Online, code 531.

	CLS	Saloon	Estate	Coupé	Cabriolet	Item number
01 iPad® Docking Station for rear passenger compartment, plug & play ¹ . The holder, which can be tilted and rotated, allows you to position your iPad® to suit your requirements, vertically or horizontally. All of your device's controls remain fully accessible. The holder and the supplied protective film for the device's screen enhance crash safety. The film also helps prevent the display from being scratched. Simply slide the mount into the slot provided on the back of the front seats until it latches securely into place. When an iPad® is inserted, it will automatically begin to recharge. Further devices can be charged via the USB interface and separately available charging cable.						
iPad® 4, kit.	●	●	●			A205 820 0876
iPad® Air, kit.	●	●	●			A205 820 7000
iPad® Air 2, kit.	●	●	●			A205 820 2001
02 CD drive. CD player for all current music formats, fully integrated into the operating logic of your vehicle. Artist, album, title and title image are shown on your central display. Discreetly installed in the glove compartment to protect from prying eyes.	●	●	●	●	●	A222 820 6306
03 USB power charger. An elegant rapid charger for your mobile phone. Its intelligent "smart charging" and output of up to 2 x 2.4 A allow you to power up your mobile quickly and conveniently via the cigarette lighter while you're on the move. The elegant design echoes that of your vehicle key and blends perfectly with the interior. With overheating protection and subtly illuminated USB slots that make the charger easy to use in the dark, too.	●	●	●	●	●	A213 820 0803
04 Media Interface consumer cable kit ² . Control your iPod®, your iPhone® or other devices with a micro USB port via the multifunction steering wheel or your audio system. For further information, go to www.mercedes-benz.com/connect .	●	●	●	●	●	A213 820 4202

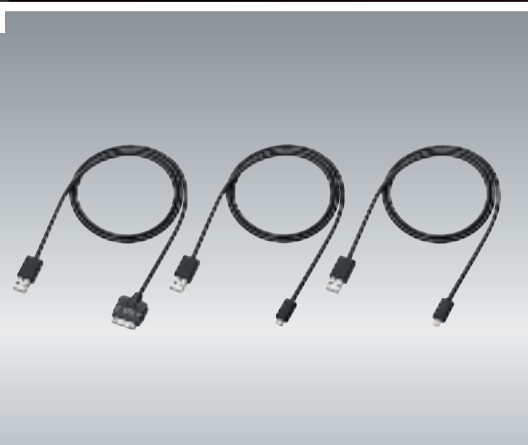
¹ Requirement: Pre-installation for Entertainment and Comfort, code 866. ² cable also available separately.



01
02 03



04





01 02



03 04
05 06



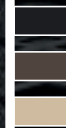
Special touches. Interior accessories.

	CLS	Saloon	Estate	Coupé	Cabriolet	Item number
Style & Travel Equipment with direct adapter pictures show similar products. It's simple to connect the product of your choice – tablet PC holder, coat hanger or folding table – to the pre-installation in your seat with the aid of the direct adapter (code 866), and equally easy to remove it again.						
01 Tablet PC holder.	●	●	●			A000 827 2200
02 Safety case for tablet PC. Incl. protective foil.	●	●	●			on request
03 Coat hanger.	●	●	●			A000 810 4100
04 Folding table.	●	●	●			A000 816 0200
05 AIR-BALANCE Package. The vehicle interior can be fragranced to suit your own individual preference with the AIR-BALANCE Package (special equipment code P21).						
06 Flacon, FREESIDE MOOD. Fragrance family: citrus, floral, tea. Citrus and tea with floral top notes. Base notes include cedar, patchouli and ambergris.	●	●	●	●	●	A222 899 0600
06 Flacon, SPORTS MOOD. Fragrance family: green, floral, citrus. Based on lime tree blossom and fresh, light-green leaves with a hint of moss.	●	●	●	●	●	A000 899 0188
06 Flacon, DAYBREAK MOOD. Fragrance family: slightly fruity, spicy. Fresh peppermint and citrus fruits with base notes of nutmeg and wood. Refined with jasmine and vetiver.	●	●	●	●	●	A238 899 0400
06 Flacon, NIGHTLIFE MOOD. Fragrance family: woody, oriental, ambergris. Wood notes with fresh, cool spices such as cardamom and pink pepper.	●	●	●	●	●	A000 899 0388
06 Flacon, DOWNTOWN MOOD. Fragrance family: floriental, musk, fruity. Floral combination of jasmine and lilac with undertones of musk, ambergris and cashmere.	●	●	●	●	●	A000 899 0288
06 Flacon, AGARWOOD MOOD. Fragrance family: woody, smoky, oriental. Defined by oud, with subtle wood notes and contrasting smokiness.	●	●	●	●	●	A000 899 0200
06 Flacon, PACIFIC MOOD. Fragrance family: lemon and orange top notes, accompanied by a blend of spices.	●	●	●	●	●	A000 899 0900
Empty flacon not pictured. Would you like to use your own choice of fragrance? The empty flacon for the AIR-BALANCE Package is the perfect solution.	●	●	●	●	●	A222 899 0188

		CLS	Saloon	Estate	Coupé	Cabriolet	Item number
01	Illuminated door sill panels, front, white illumination. A distinctive, eye-catching accessory, whether in daylight or at night – thanks to brightly illuminated Mercedes-Benz lettering, set in an elegant machined stainless steel panel.	●	●	●	●	●	on request
	CLASSIC ribbed mats, black. Durable, extremely hardwearing needle felt mats, with embroidered Mercedes-Benz lettering.						
02	Driver's and front passenger's mats, black.	●	●	●			A213 680 1602 9G32
	Rear mats, set of 2, black.	●	●	●			A213 680 6303 9G32
	CLASSIC all-season mats, set of 2. Made from robust, washable synthetic material for heavy use. Latest design with recessed areas and raised border. Branded with the distinctive Mercedes star.						
03	Driver's and front passenger's mats, black.	●	●	●			A213 680 0106 9G33
					●	●	A238 680 7701 9G33
	Rear mats, set of 2, black.	●	●	●			A213 680 0206 9G33
					●	●	A238 680 8301 9G33
	Driver's and front passenger's mats, espresso brown.	●	●	●			A213 680 0106 8U51
					●	●	A238 680 7701 8U51
	Rear mats, set of 2, espresso brown.	●	●	●			A213 680 0206 8U51
					●	●	A238 680 8301 8U51
	Driver's and front passenger's mats, macchiato beige.		●	●			A213 680 0106 8U52
	Rear mats, set of 2, macchiato beige.		●	●			A213 680 0206 8U52

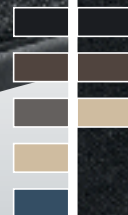


01
02 03





01 02
03



		CLS	Saloon	Estate	Coupé	Cabriolet	Item number
CLASSIC velour mats, set of 4. Elegant, high-quality tufted velour mats, with embroidered Mercedes-Benz lettering.							
01	black.	●	●	●			A213 680 3505 9J74
					●	●	A238 680 3702 9J74
	espresso brown.	●	●	●			A213 680 3505 8T85
					●	●	A238 680 3702 8T85
	magma grey.	●					A213 680 3505 7Q17
	macchiato beige.		●	●			A213 680 3505 8U20
saint-tropez blue.					●	●	A238 680 3702 5F32
EXCLUSIV floor mats. Exclusive velour mats with particularly deep, thick pile, featuring metal badge with Mercedes-Benz lettering. Available in various colours to match your interior.							
02	Driver's and front passenger's mats, black.	●	●	●			A213 680 1806 9K26
	Rear mats, set of 2, black.	●	●	●			A213 680 2406 9K26
	Driver's and front passenger's, espresso brown.	●	●	●			A213 680 1806 8U72
	Rear mats, set of 2, espresso brown.	●	●	●			A213 680 2406 8U72
	Driver's and front passenger's, macchiato beige.	●	●	●			A213 680 1806 8V00
	Rear mats, set of 2, macchiato beige.	●	●	●			A213 680 2406 8V00

		All-Terrain	Item number
CLASSIC velour mats, set of 4. Elegant, high-quality tufted velour mat with ALL-TERRAIN badge on the driver's and front passenger's mat. Available in various colours to match your interior.			
03	black.	●	A213 680 5305 9J74
	espresso brown.	●	A213 680 5305 8T85
	macchiato beige.	●	A213 680 5305 8U20

Tailored solutions. Child safety.

If your vehicle features automatic front passenger airbag deactivation (special equipment code U10), sensor readings classify the occupant by weight. With rear-facing child seats, the front passenger airbag is deactivated, while with front-facing child seats the airbag is either activated or deactivated depending on the classification. The system works both when using i-Size/ISOFIX attachment

points and when the child seat is attached using only the seat belt. Mercedes-Benz child seats are available in the “Limited Black” design. The covers are washable and very hardwearing. Replacement headrest covers are available for the “BABY-SAFE plus II”, “DUO plus” and “KIDFIX” child seats in chilli red and flannel grey.

	CLS	Saloon	Estate	Coupé	Cabriolet	Item number
01 “KIDFIX” child seat. Booster seat with height-adjustable backrest with seat side bolsters for side impact protection. The “KIDFIX” seat can be secured using the ISOFIT attachment system in addition to the three-point seat belt. For children between the ages of around 3.5 and 12 (15 to 36 kg).	●	●	●	●	●	A000 970 2002
02 “KIDFIX XP” child seat, with ISOFIT. Support and safety for older children, too: the quality “KIDFIX XP” child seat is suitable for children between the ages of around 3.5 and 12 years (15 to 36 kg) and is securely attached to the vehicle by means of the 3-point seat belt or, in addition, ISOFIT. If required, the backrest can be removed so that the “KIDFIX XP” can be used as a booster seat.	●	●	●	●	●	A000 970 2302
03 “DUO plus” child seat. Offers safety for children between the ages of around 9 months and 4 years (9 to 18 kg). Fitted as standard with TopTether, an additional belt for securing the head section, a height-adjustable shoulder belt, vent lines and ISOFIX child seat securing system. Adjustable tilt.	●	●	●	●	●	A000 970 1702
04 “BABY-SAFE plus II” child seat. Offers safety through deep, moulded seat shell for high side impact protection. Special padding, designed to protect particularly vulnerable body areas of infants up to around 15 months (up to 13 kg).	●	●	●	●	●	A000 970 1302
05 Headrest cover, chilli red. For “KIDFIX” child seat.	●	●	●	●	●	A000 970 0256 3E16
06 flannel grey.	●	●	●	●	●	A000 970 0256 7N37
Headrest cover, chilli red. For “DUO plus” child seat not pictured.	●	●	●	●	●	A000 970 0356 3E16
flannel grey not pictured.	●	●	●	●	●	A000 970 0356 7N37
Headrest cover, chilli red. For “BABY-SAFE plus II” child seat not pictured.	●	●	●	●	●	A000 970 0156 3E16
flannel grey not pictured.	●	●	●	●	●	A000 970 0156 7N37



3.5 to 12 years

15 to 36 kg

01 02
04 05 06



3.5 to 12 years

15 to 36 kg

03



9 months to 4 years

9 to 18 kg



up to 15 months

up to 13 kg





02

03

01

08

07

06

05

04

Cargo & Care.

When it comes to the practical features, the last thing you want to do is compromise. Especially not where design and aesthetic appeal are concerned. In your new E-Class classic good looks are combined with perfect everyday practicality – in impressive style.

01	Basic carrier bars.	38
02	Mercedes-Benz roof box 330, matt silver.	38
03	New Alustyle bicycle rack.	41
04	Multi-spoke wheel.	10
05	Black valve caps.	18
06	Hub caps in himalayas grey.	18
07	High-sheen chromed door handle recesses.	21
08	Black exterior mirror housings.	21



An extra dimension in space. Genuine transport solutions.

		Saloon	Estate	Item number
01	Basic carrier bars/Basic carrier bars for roof rails. Aluminium carrier bars, precision-tailored to the body of your Mercedes-Benz – the perfect basis for a range of Mercedes-Benz transport accessories: ski and snowboard rack, bicycle rack or roof boxes. Aerodynamic Mercedes-Benz design with optimised noise level. Crash-tested. Lockable.	●		A213 890 0693
			●	A213 890 0793
	Transport and stowage bag not pictured. Robust bag, made from high-quality nylon fabric. Protects your basic carrier bars when stowing or transporting them.	●	●	A000 890 0111
	Mercedes-Benz roof boxes. An aerodynamic design, tailored to your Mercedes-Benz. Made from extremely durable material. Designed for quick, optimised fitting to the basic carrier bars or basic carrier bars for roof rails. Particularly convenient loading and unloading thanks to the option of double-sided opening. Lockable from both sides.			
02	Mercedes-Benz roof box 330, matt silver. Capacity approx. 330 litres. Maximum load capacity 50 kg ¹ .	●	●	A000 840 0400
03	Mercedes-Benz roof box 400. Capacity approx. 400 litres. Maximum load capacity 75 kg ¹ . Handle strip for easier opening and closing.			
	black metallic.	●	●	A000 840 0000
	matt silver.	●	●	A000 840 0100
04	Mercedes-Benz roof box 450. Capacity approx. 450 litres. Maximum load capacity 75 kg ¹ . Handle strip for easier opening and closing.			
	black metallic.	●	●	A000 840 0300
	matt silver.	●	●	A000 840 0200
05	New Alustyle ski and snowboard rack, Comfort. For up to 6 pairs of skis ² or 4 snowboards. Lockable. Practical pull-out function makes loading and unloading easier.	●	●	A000 890 0393
	Adapter kit for ski and snowboard rack, Comfort. Allows you to use your New Alustyle ski and snowboard rack, Comfort with the latest, aerodynamically optimised basic carrier bar generation. 8-piece set. Designed for easy fitting by the customer.	●	●	A000 990 8406
06	New Alustyle ski and snowboard rack, Standard. For up to 4 pairs of skis ² or 2 snowboards. Lockable.	●	●	A000 890 0493

¹ Please bear in mind your vehicle's permissible roof load. ² Subject to geometry of skis.



02

50 kg¹



03 01

75 kg¹

04

75 kg¹





01
02



03 04



Stylish transport.
Genuine bicycle racks.

	CLS	Saloon	Estate	Coupé	Cabriolet	Item number
01 Rear bicycle rack for trailer hitch, folding. Easy-to-use, lockable rear bicycle rack, designed to provide secure transport for 2 or 3 bicycles. Extremely simple to fit to the trailer hitch. Securing your bikes on the rack is equally simple. Maximum load of up to 30 kg per rail, making rack suitable for most ebikes. An ingenious roller mechanism means that the boot can still be opened. The rack is easy to fold for space-saving stowage in the boot, at your holiday accommodation or at home.						
For 2 bicycles.	●	●	●	●	●	A000 890 1100
For 3 bicycles.	●	●	●	●	●	A000 890 1200
02 New Alustyle bicycle rack¹. Extremely lightweight bicycle rack, designed to allow you to attach a bicycle to the basic carrier bars or basic carrier bars for roof rails. Cycles can either be attached to the rack once it is in place on the roof or before it is fitted. Support frame folds down when not in use to reduce drag when travelling without bicycles. Suitable for bicycles with a max. frame diameter of 98 mm (circular frame tubes) or 110 x 70 mm (oval frame tubes). Please bear in mind your vehicle's permissible roof load. Bicycle racks are supplied individually.		●	●			A000 890 0293
Distance adapter for New Alustyle bicycle rack. Connecting element, required when using the New Alustyle bicycle rack. Easy for the customer to fit.		●	●			A002 990 0399
03 Adapter for trailer. For connecting 13-pin trailer socket to 7-pin plug.	●	●	●	●	●	A000 821 1856
04 Trailer hitch. Fully automatic folding trailer hitch, specifically for Mercedes-Benz vehicles. High anti-corrosion protection.	●	●	●	●	●	on request

¹ Please bear in mind your vehicle's permissible roof load.

Flawless solutions.

Genuine boot/load compartment accessories.

	CLS	Saloon	Estate	Coupé	Cabriolet	Item number
01 EASY-PACK boot box, black. A practical option for storing items in the boot. When it is not in use, the box can be folded up at the touch of a button and slid beneath the rear shelf to save space.		●				A213 695 0300
02 Shallow boot tub, black. Made from impact-resistant, non-slip polypropylene. Structured surface holds separately available stowage crate in place. Vehicle's load-securing rings remain accessible.						
With through-loading feature.	●		●			A213 814 0100
		●				A213 814 0600
Deep boot tub, black not pictured. Deep edge all round. Made from flexible, impact-resistant plastic.			●			A213 814 0200
03 Stowage crate, black. A secure hold for items which are liable to tip over or slide around. Optimum functionality only in conjunction with shallow boot tub.	●	●	●	●		A000 814 0041
04 Snap-in module for the boot. Partition your boot to suit your requirements and prevent the contents from sliding around: The brackets can be freely positioned along the outer edges of the load compartment floor. The system's telescopic frame provides a secure hold. Factory-fitted pre-installation (code 942) is not required.			●			A166 860 0034
Extension kit.			●			A166 860 0751
05 Luggage net, boot floor, black¹. Designed to secure lightweight items in place. Black stretch nylon mesh hugs contents. Luggage net does not lie entirely on floor.	●	●	●	●	●	A213 860 2901
06 Luggage-securing feature, black. Ingenious solution to the problem of luggage sliding around in the boot. Attaches securely around the object in question thanks to Velcro strip.	●	●		●	●	A000 987 0400
Lashing strap, black not pictured. Adjustable strap with fastener – ideal for securing items to the tie-down eyes.	●	●	●	●	●	A000 890 0294
07 Collapsible shopping crate, anthracite.	●	●	●	●	●	A203 840 0020

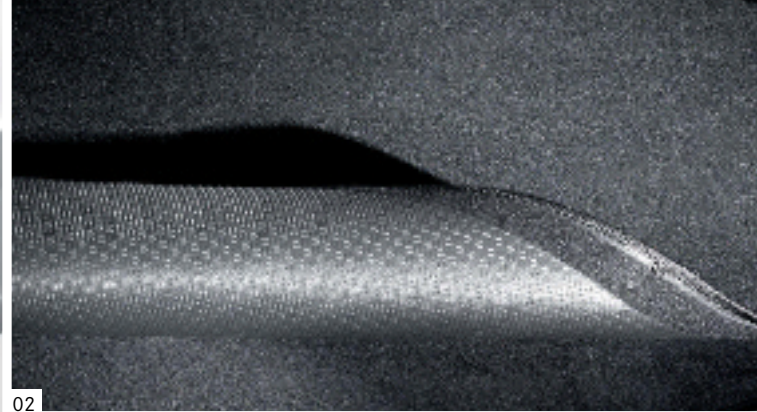
¹ Not for vehicles with code 811 (Burmester® high-end 3D surround sound system).



01 02 03
04 05



06 07



02



01 03
05 06



04



	CLS	Saloon	Estate	Coupé	Cabriolet	Item number
01 Concertina load sill protector, black. Protects the rear area of the car from scratches when you're loading up – and prevents dirt from the car from getting onto your clothes. Practical design – can be secured to boot tub or reversible mat.	●					A253 693 1900
		●	●	●	●	A253 693 2000
02 Reversible mat, black. With one high-quality velour side and one non-slip side. Helps keep the original boot floor clean. Can be connected to concertina load sill guard.		●				A213 680 4404
			●			A213 680 4304
03 Refrigerator box. Not only cools but warms, too: cools to up to 20 °C below ambient temperature – to max. –2 °C. Can be switched to warming function. 24 litres. Can be connected to 12 V socket in vehicle or to 230 V power source via separately available rectifier.	●	●	●	●	●	A000 820 4206
04 Rectifier. Allows the refrigerator box to be connected to a 230 V socket at home.	●	●	●	●	●	A000 982 0021
05 Charger with trickle charge function, 5 A¹. Checks, charges and revives your battery – even if it's totally flat. Tailored to your vehicle's complex electronic systems.	●	●	●	●	●	A000 982 3021
With 25 A not pictured. This variant offers a faster charging process and a selection of different charging modes.	●	●	●	●	●	A000 982 0321
06 Safety vest, compact. This fluorescent safety vest makes you more visible to others. Available rolled up in separate fabric bag. Suitable for the stowage compartments in the vehicle doors.	●	●	●	●	●	A000 583 3500

¹ For Europe. Available under separate item number in the UK and Switzerland.

Powerful personality.
AMG Genuine Accessories.

	Saloon	Estate	Coupé	Cabriolet	Item number
AMG bodystyling. A sporty exterior for your E-Class. The AMG bodystyling comprises front apron, side sill panels and rear apron.					
01	●	●			A213 880 3002
			●	●	A238 880 4101
	●	●			A213 880 3102
			●	●	A238 880 4201
02	●				A213 690 9203
		●			A213 690 9303
			●	●	A238 690 9202
	●				A213 880 3302
03		●			A213 880 3502
			●	●	A238 880 3601
	●				A213 880 3402
		●			A213 880 3602
04			●	●	A238 880 3701
	●	●			A213 820 6003



01
02 03



04



02 50.8 cm | 20"



50.8 cm | 20" 04



50.8 cm | 20" 01 03 50.8 cm | 20"
50.8 cm | 20" 05 06 48.3 cm | 19"



07 48.3 cm | 19"

Distinctive edge. AMG light-alloy wheels for the CLS.

				CLS	Item number
01	Multi-spoke wheel.	Finish: titanium grey, high-sheen. Rear axle:	Wheel: 8 J x 20 ET 33 Tyre: 245/35 R20 Wheel: 9 J x 20 ET 28 Tyre: 275/30 R20	●	A257 401 1900 7X21 A257 401 2000 7X21
02	Multi-spoke wheel.	Finish: black, high-sheen. Rear axle:	Wheel: 8 J x 20 ET 33 Tyre: 245/35 R20 Wheel: 9 J x 20 ET 28 Tyre: 275/30 R20	●	A257 401 1900 7X23 A257 401 2000 7X23
03	Multi-spoke wheel.	Finish: black, high-sheen rim flange. Rear axle:	Wheel: 8 J x 20 ET 33 Tyre: 245/35 R20 Wheel: 9 J x 20 ET 28 Tyre: 275/30 R20	●	A257 401 1900 7X72 A257 401 2000 7X72
04	5-twin-spoke wheel.	Finish: tremolite metallic, high-sheen. Rear axle:	Wheel: 8 J x 20 ET 33 Tyre: 245/35 R20 Wheel: 9 J x 20 ET 28 Tyre: 275/30 R20	●	A257 401 2100 7X44 A257 401 2200 7X44
05	5-twin-spoke wheel.	Finish: black, high-sheen. Rear axle:	Wheel: 8 J x 20 ET 33 Tyre: 245/35 R20 Wheel: 9 J x 20 ET 28 Tyre: 275/30 R20	●	A257 401 2100 7X23 A257 401 2200 7X23
06	5-twin-spoke wheel.	Finish: black, high-sheen. Rear axle:	Wheel: 8 J x 19 ET 33 Tyre: 245/40 R19 Wheel: 9 J x 19 ET 28 Tyre: 275/35 R19	●	A257 401 1500 7X23 A257 401 1600 7X23
07	5-twin-spoke wheel.	Finish: tremolite metallic, high-sheen. Rear axle:	Wheel: 8 J x 19 ET 33 Tyre: 245/40 R19 Wheel: 9 J x 19 ET 28 Tyre: 275/35 R19	●	A257 401 1500 7X44 A257 401 1600 7X44

Unique style.
AMG light-alloy wheels and AMG Genuine Accessories.

			CLS	Saloon	Estate	Coupé	Cabriolet	Item number	
01	Multi-spoke wheel.	Finish: titanium grey, high-sheen. Rear axle:	Wheel: 8.0 x 20 ET 43 Tyre: 245/35 R20 Wheel: 9.0 x 20 ET 49 Tyre: 275/30 R20		●	●	●	●	A213 401 2200 7X21 A213 401 2300 7X21
02	Multi-spoke wheel.	Finish: black, high-sheen. Rear axle:	Wheel: 8.0 x 20 ET 43 Tyre: 245/35 R20 Wheel: 9.0 x 20 ET 49 Tyre: 275/30 R20		●	●	●	●	A213 401 2200 7X23 A213 401 2300 7X23
03	5-twin-spoke wheel.	Finish: black, high-sheen. Rear axle:	Wheel: 8.0 x 20 ET 43 Tyre: 245/35 R20 Wheel: 9.0 x 20 ET 49 Tyre: 275/30 R20		●	●	●	●	A213 401 2400 7X23 A213 401 2500 7X23
04	5-twin-spoke wheel.	Finish: black, high-sheen. Option for rear axle:	Wheel: 8.0 x 19 ET 43 Tyre: 245/40 R19 Wheel: 9.0 x 19 ET 49 Tyre: 275/35 R19		●	●	●	●	A213 401 2000 7X23 A213 401 2100 7X23
05	5-twin-spoke wheel.	Finish: titanium grey, high-sheen. Option for rear axle:	Wheel: 8.0 x 19 ET 43 Tyre: 245/40 R19 Wheel: 9.0 x 19 ET 49 Tyre: 275/35 R19		●	●	●	●	A213 401 2000 7X21 A213 401 2100 7X21
06	AMG hub caps with AMG emblem. Set of 4 in presentation packaging.			●	●	●	●	●	A000 400 3100
07	AMG door pin, round. In high-quality stainless steel.			●	●	●	●	●	A000 766 0800
AMG floor mats, black, short loop pile not pictured. With embroidered AMG lettering.									
Driver's mat.				●					on request
					●	●			A213 680 6705 9G63
							●	●	A238 680 4902 9G63
Complete set.				●					on request
					●	●			A213 680 6605 9G63
							●	●	A238 680 4502 9G63
AMG indoor car cover not pictured. Silver-coloured, with black AMG logo.				●					on request
					●				A213 899 0800
						●			A213 899 0900
							●		A238 899 0200
								●	A238 899 0300

Light-alloy wheels are supplied without tyres, wheel bolts, valve caps or hub caps.



50.8 cm | 20" 01 02 50.8 cm | 20"



50.8 cm | 20" 03 04 48.3 cm | 19"
48.3 cm | 19" 05 06





Mercedes-Benz Shop

Discover the current Mercedes-Benz Collection and the latest navigation CDs and DVDs in our online shop at <http://shop.mercedes-benz.com>. Please note that orders can only be placed and deliveries made within Germany.



Mercedes-Benz Accessories Configurator

Choose your favourite accessories online. Our Accessories Configurator shows you at a click of the mouse how, for example, the various Mercedes-Benz light-alloy wheels will look on your vehicle. Visit our website at <http://configurator.mercedes-benz-accessories.com>.



March 2018.

Please note: changes may have been made to the products since this publication went to press (03/2018). The manufacturer reserves the right to make changes to the design, form, colour and specification during the delivery period, provided these changes, while taking into account the interests of the vendor, can be deemed reasonable with respect to the purchaser. Where the vendor or the manufacturer uses symbols or numbers to describe an order or the subject of an order, no rights may be derived solely from these. The illustrations may include accessories and items of optional equipment which are not part of standard specification. Colours may differ slightly from those shown, owing to the limitations of the printing process. This publication may include products and services which are not available in certain countries. Information given regarding statutory regulations, legal requirements and taxation and the consequences thereof applies to the Federal Republic of Germany only and is correct at the time of going to print. Please consult your Mercedes-Benz Retailer for final details. Prices subject to change.

Provider: Daimler AG, Mercedesstr. 137, 70327 Stuttgart
Mercedes-Benz Accessories GmbH · A Daimler Company

3230 · 3004 · 02-01/0318 · Printed in the Federal Republic of Germany
© 2018 Mercedes-Benz Accessories GmbH. All rights reserved.